

Graduate Hospital Townhome with 2 Car Parking

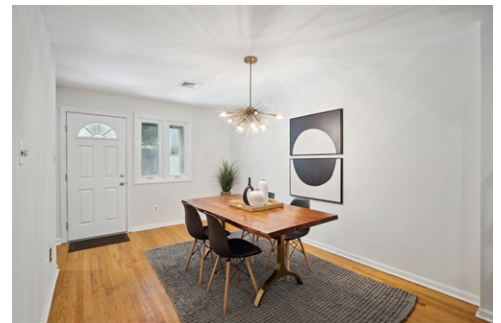


\$ 689,000



2000 Kater St C, Philadelphia, PA 19146

- » Beds: 2 | Baths: 2 Full, 1 Half
- » MLS #: PAPH2260996
- » Single Family
- » Located in the Albert M. Greenfield Catchment
- » Home features 2 spacious bedrooms, 2.5 baths with a finished basement
- » More Info: 2000KaterStC.com



Eric Fox
(267) 625-4504 (Eric Cell)
eric@efoxhomes.com
<http://www.efoxhomes.com>



THE ERIC FOX TEAM

Compass
1430 Walnut Street
3rd Floor
Philadelphia, PA 19102
(267) 435-8015

Situated on an extra-wide 20ft lot, this townhome checks all the boxes; beautiful tree-lined street, Greenfield catchment, primary suite with private deck, updated kitchen, finished basement and “the cherry-on-top” two-car GATED PARKING. Enter into the spacious and bright living room area with large front window, hardwood flooring, recessed lighting and convenient coat closet. The dining room sits at the rear with a gorgeous sunburst pendant light fixture, easy access to the kitchen and a door directly to the parking spaces - a perfect set up for unloading groceries. The kitchen features 42” cabinetry, granite countertops, white subway tile backsplash and stainless-steel appliances. Additional living space is found in the finished basement where built-in shelving, a transom window and powder room create the perfect work from home office or a tv/movie room. There’s additional unfinished storage and a laundry area downstairs as well. Upstairs the extra bright primary suite sits at the rear of the home, overlooking the small community’s private parking lot. The suite has dual closets and an en-suite bath featuring a neutral tiled half wall and shower surround with modern vanity. Just off the bedroom is a rear, recently redone and maintenance free composite deck- perfect for enjoying the sunshine or outdoor dining. The spacious front bedroom has 3 large windows, a walk-in closet and is located just outside the tiled hallway bath with tub and shower combination. This townhome sits on a quiet, tree-lined block in the desirable

